

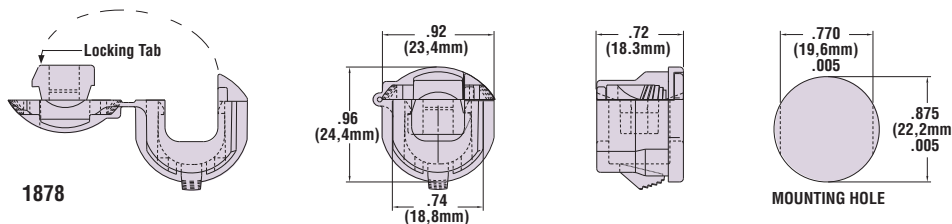
Heyco® RDD Lockett™ Strain Relief Bushings

For Flat Cables

WILL FIT THESE CABLES			PANEL DIMENSIONS				PART NO.	DESCRIPTION	
UL Type Designation	AWG Conductors	Approximate Size		Mounting Hole Size		Thickness			
		in.	mm.	in.	mm.	in.	mm.	Black	
SPT-1	18/2	.12 x .22	2,5 x 7,8	.625 w/	15,9 w/	.032	0,8	1872	RDD 100A
	18/3	.12 x .32	3,0 x 7,8	.550 flats	14,0 flats	.040	1,1		
						.048	1,2		
						.063	1,6		
						.099	2,5		
SPT-2 HPN	18/2	.12 x .32	3,0 x 7,8	.625 w/	15,9 w/	.032	0,8	1874	RDD 100
	16/2	.16 x .32	4,1 x 7,8	.550 flats	14,0 flats	.040	1,1		
						.048	1,2		
						.063	1,6		
						.099	2,5		
HPN	16/3	.16 x .37	4,1 x 9,4	.875 w/ .770 flats	22,2 w/ 19,6 flats	.032	0,8	1878	RDD 200
SPT-2	18/3	.15 x .40	3,8 x 10,2			.063	1,6		
	16/3	.16 x .41	4,1 x 10,4			.099	2,5		
SPT-3	18/2	.19 x .35	4,8 x 8,9			.126	3,2		
	18/3	.19 x .39	4,8 x 9,9	.157	4,0				
	16/2	.20 x .37	5,1 x 9,4						
	16/3	.20 x .43	5,1 x 10,9						
	14/2	.24 x .42	6,1 x 10,7						

Standard color black. Consult Heyco for white and other colors.

- Automated application equipment speeds assembly and lowers costs while reducing or eliminating repetitive manual assembly motions.
- See page 3-1 for Heyco's Automated Pre-Assembly Equipment.
- Installs easily with fingertip pressure into a standard round or Double "D" hole. No clumsy hand tools required!
- Assembly friendly! Independent of insertion into the panel, RDD Lockett Strain Reliefs self-lock onto the cable. Thus, they may be preassembled offline for final assembly at a later time or remote location, for lower installed cost!
- Multiple panel locking steps secure lockit strain relief into range of panel thicknesses.
- Consult Heyco for other wire types and sizes.



Material: 6/6 Nylon
 Certifications: Recognized under the Component Program of Underwriters' Laboratories File E15331
 Certified by the Canadian Standards Association File LR8919
 Flammability Rating: 94V-2
 Material Temperature Index: 257°F (125°C)—Maximum temperature on part not to exceed 221°F (105°C)

*Quick
Specs*